



Totally Enclosed Lifeboats

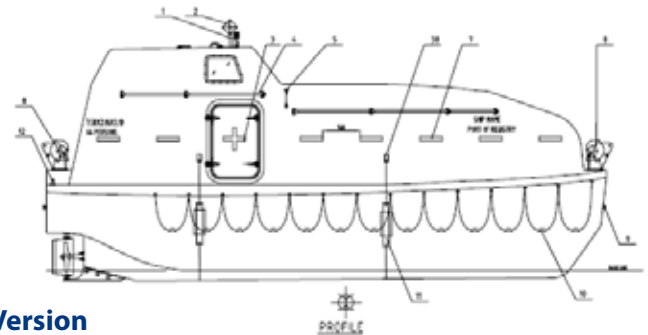
Vanguard Totally Enclosed Lifeboats are designed & manufactured to SOLAS 86 regulations & adheres to stringent governmental requirements.

Critical spares and expert maintenance is also available via Vanguard's extensive global network of service agents, which cover major ports around the world.

Each lifeboat is built & tested to ensure that the lives of our seamen are protect at all times, especially in the toughest of situations.

Vanguard Totally Enclose Lifeboats are available in 2 different versions, tanker & dry cargo versions, with 4 different sizes for each version.

Launched via conventional davits, these lifeboats are designed to evacuate crew, safely & efficiently from vessels & offshore platforms. Fully equipped with the latest 'SH' On-Off load hook release systems with in-built fall preventive devices, Vanguard Totally Enclosed Lifeboats are at the front of today's marine safety technology.



Dry Cargo Version

Model	Dimension [m]	Capacity [men]	Speed [knots]	Hook Dist. [m]	Unloaded [kg]	Loaded [kg]
VG7.5C	7.5 X 2.86 X 3.35	66	>6	7.10	3 220	8 665
VG8.5C	8.5 x 3.2 x 3.3	85	>6	8.00	4 354	11 367
VG10.5C	10.5 x 3.70 x 3.75	120	>6	9.85	5 435	15 335
VG11.95C	11.95 X 3.85 X 3.7	150	>6	11.28	6 100	18 475

Tanker Version

Model	Dimension [m]	Capacity [men]	Speed [knots]	Hook Dist. [m]	Unloaded [kg]	Loaded [kg]
VG7.5F	7.5 X 2.86 X 3.35	66	>6	7.10	3 500	8 945
VG8.5F	8.5 x 3.2 x 3.3	85	>6	8.00	4 685	11 698
VG10.5F	10.5 x 3.70 x 3.75	120	>6	9.85	5 885	15 785
VG11.95F	11.95 X 3.85 X 3.7	150	>6	11.28	6 199	18 574

Vanguard Totally Enclosed Lifeboats are approved by,

Effective Date: 21 Nov 2011

